

MCH200 OPOS MSR Tester Installation and Operation Guide

UIC EC/DC Document PM029

Revision 1.2

07 Nov, 2019

Taiwan, Factory

1st F., No. 1, Lane 15,

Chih Chiang Street

Tu Cheng City,

Taipei Hsien, Taiwan

Tel: 886-2-2268-7075

Fax: 886-2-2268-6327

Email: uniform@ms1.hinet.net

URL: www.uniform.com.tw

USA, Office

47341 Bayside Pkwy

Fremont, CA 94538-6574

U.S.A.

Tel: (510) 438-6799

Fax: (510) 438-6790

Email: uicu@aol.com

URL: www.uicusa.com



Copyright 2002 Uniform Industrial Corporation

All rights reserved.

Contents

1. Overview.....	3
2. Driver (MCH200 Service Object) Installation.....	3
3. Application (OPOS Test) Installation	3
4. OPOS Test Operation.....	4
4.1 Execute program	4
4.2 Swipe Magnetic Stripe Card	6
4.3 Read Only Properties	8
4.4 Exit.....	9

1. Overview

The OPOS Test is an application that can be applied to test the OPOS compliance of the MSR. It is fully compliant with OPOS Release 1.12. For further information on OPOS, please refer to “OLE for Retail POS Application Programmer’s Guide”.

2. Driver (MCH200 Service Object) Installation

The MSR200 Service Object install shield locates in the directory named “MSR200 OPOS SO”.

Procedure:

- Execute the MCH200 OPOS SO.msi.
- Follow the installation procedure with the default settings.

3. Application (OPOS Test) Installation

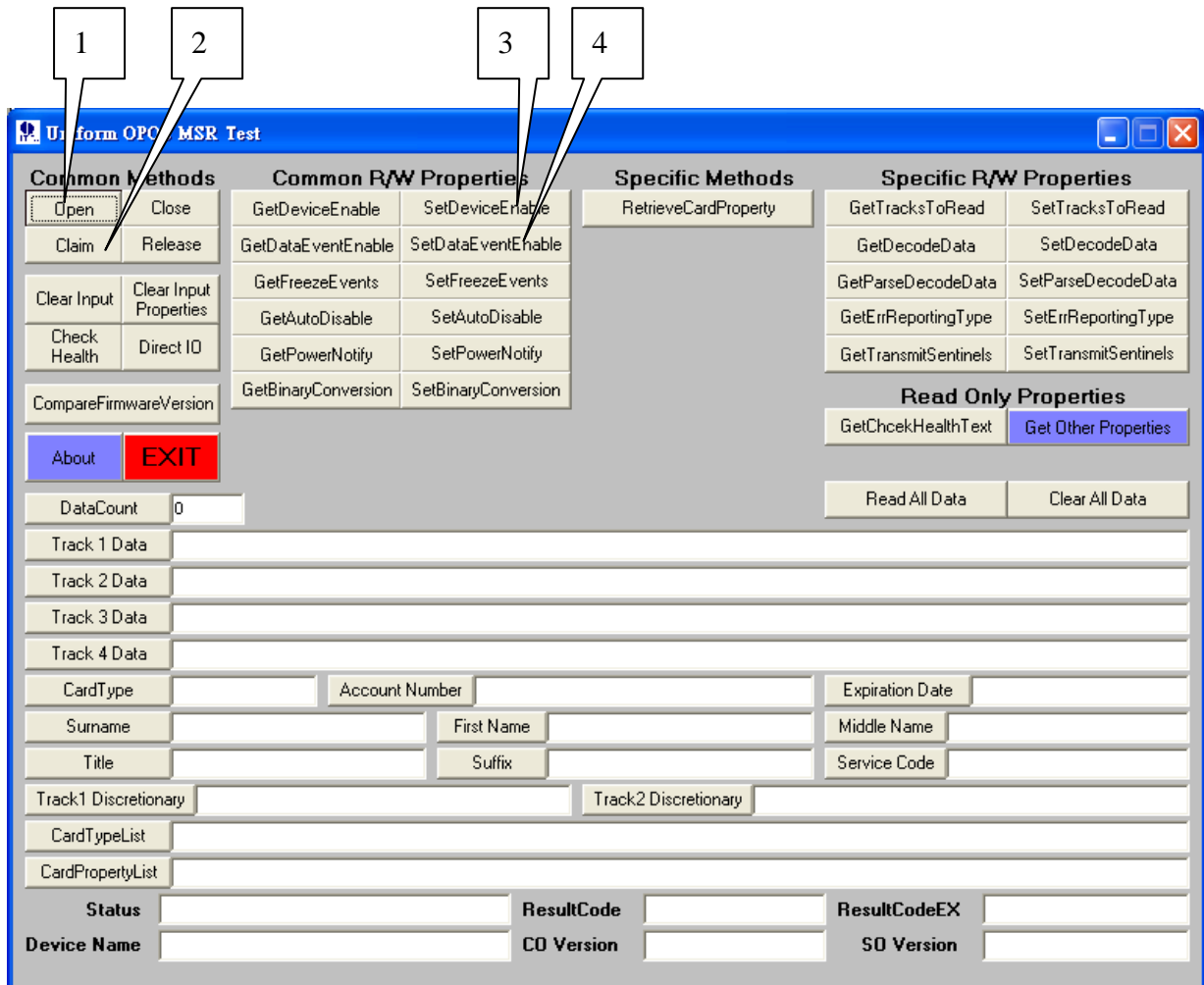
The OPOS Test install shield locates in the directory named “MSR Test”.

Procedure:

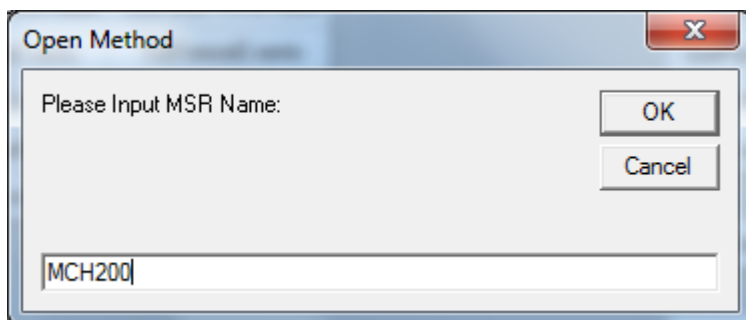
- Execute the MSROPX11.exe file.
- Follow the installation procedure with the default settings.

4. OPOS Test Operation

4.1 Execute program



1. Click the Open button first. After the Open button is clicked, a dialog will be presence as below, enter "MCH200" and then click OK.



2. Click Claim button to claim the MSR.
3. Click the SetDeviceEnable button to enable the device. Please refer to the DeviceEnabled property of OLE for Retail POS Application Programmer's Guide.
4. Swipe the Magnetic Stripe Card and click the setDataEventEnable button to get the card data. Please refer to the DataEventEnable property of OLE for Retail POS Application Programmer's Guide.

Note: How an application uses an OPOS control

Basically, the application follows this general sequence:

1. Call Open method.
2. Call ClaimDevice method.
3. Set DeviceEnabled property to TRUE.
4. Use the device.
5. Set DeviceEnabled property to FALSE to disable the device.
6. Call ReleaseDevice method to release exclusive access to the device.
7. Call Close method to release the Service Object.

4.2 Swipe Magnetic Stripe Card

After the buttons were clicked, the color of the buttons will change to green. And you can swipe the magnetic stripe card to get card data.

Uniform OPOS MSR Test

Common Methods	Common R/W Properties	Specific Methods	Specific R/W Properties
Open	GetDeviceEnable	RetrieveCardProperty	GetTracksToRead
Close	SetDeviceEnable		SetTracksToRead
Claim	GetDataEventEnable		GetDecodeData
Release	SetDataEventEnable		SetDecodeData
Clear Input	GetFreezeEvents		GetParseDecodeData
Clear Input Properties	SetFreezeEvents		SetParseDecodeData
Check Health	GetAutoDisable		GetErrReportingType
Direct IO	SetAutoDisable		SetErrReportingType
CompareFirmwareVersion	GetPowerNotify		GetTransmitSentinels
	SetPowerNotify		SetTransmitSentinels
About	GetBinaryConversion		
EXIT	SetBinaryConversion		
			Read Only Properties
	<input type="checkbox"/> Auto-enable Data Event		GetChcekHealthText
			Get Other Properties
DataCount: 0			Read All Data
Track 1 Data			Clear All Data
Track 2 Data			
Track 3 Data			
Track 4 Data			
CardType	Account Number	Expiration Date	
Surname	First Name	Middle Name	
Title	Suffix	Service Code	
Track1 Discretionary	Track2 Discretionary		
CardTypeList			
CardPropertyList			
Status: DeviceEnabled is True	ResultCode: 0	ResultCodeEX: 0	
Device Name: Uniform MCH200 Magnetic Stripe Reader	CO Version: 1012000	SO Version: 1012002	

After the card data was read. The DataEventEnabled property will be disabled automatically. So the color of the button will turn back to gray.

Click this button to get other read-only properties that show in 3.3.

Uniform OPOS MSR Test

Common Methods

Open Close

Claim Release

Clear Input Clear Input Properties

Check Health Direct IO

CompareFirmwareVersion

About EXIT

☒ Auto-enable Data Event

Common Properties

GetDeviceEnable SetDeviceEnable

GetDataEventEnable SetDataEventEnable

GetFreezeEvents SetFreezeEvents

GetAutoDisable SetAutoDisable

GetPowerNotify SetPowerNotify

GetBinaryConversion SetBinaryConversion

Specific Methods

RetrieveCardProperty

Specific R/W Properties

GetTracksToRead SetTracksToRead

GetDecodeData SetDecodeData

GetParseDecodeData SetParseDecodeData

GetErrReportingType SetErrReportingType

GetTransmitSentinels SetTransmitSentinels

Read Only Properties

GetCheckHealthText Get Other Properties

DataCount 0

Read All Data Clear All Data

Track 1 Data B4754270029143541*TANG*CHICHIH*17031010000000000572000000000000

Track 2 Data 4754270029143541=1703101000000000000572

Track 3 Data

Track 4 Data

CardType BANK Account Number 4754270029143541 Expiration Date 1703

Surname TANG First Name CHICHIH Middle Name

Title Suffix Service Code 101

Track1 Discretionary 00000000005720000000 Track2 Discretionary 0000000000572

CardTypeList AccountNumber,ExpirationDate,First Name,MiddleInitial,ServiceCode,Suffix,Surname,Title

CardPropertyList 4754270029143541,1703,CHICHIH,,101,,TANG,

Status MSR Data Event Status ResultCode 0 ResultCodeEX 0

Device Name Uniform MCH200 M Reader CO Version 12000 SO Version 1012002

Magnetic Stripe Card Data

Status field: Display the Event return code.

4.3 Read Only Properties

OPOS MSR Read Only Properties

Common Read Only Properties

CapCompareFirmwareVersion	True	Claimed	True
CapPowerReporting	OPOS_PR_NONE	OpenResult	Success
CapStatisticsReporting	False	PowerState	OPOS_PS_UNKNOWN
CapUpdateFirmware	False	State	OPOS_S_IDLE
CapUpdateStatistics	False		
ControlObjectDescription	OPOS MSR Control 1.12.000 [Public, by CRM/RCS-Dayton]		
ServiceObjectDescription	MCH200 OPOS Service Object Ver.2000PS1G, (C) 2018 Uniform		
DeviceDescription	Uniform MCH200, USB HID Keyboard		

MSR Specific Read Only Properties

CapCardAuthentication	None	AdditionalSecurityInformation	None
CapDataEncryption	MSR_DE_NONE	CardAuthenticationData	None
CapDeviceAuthentication	MSR_DA_NOT_SUPPORTED	CardAuthenticationDataLength	0
CapISO	True		
CapISOOne	True		
CapISTwo	False		
CapTrackDataMasking	False		
CapTransmitSentinels	True		
CapWritableTracks	MSR_TR_NONE		

OK

4.4 Exit

Click these buttons as following sequence to quit the program.

